



# Changing the Way We Care

## Background

Globally, millions of children live in orphanages. Yet, research shows 80-90% have a living parent, many of whom want to care for their children if they have the resources they need. Children are placed in orphanages primarily because of poverty and their families' inability to access basic services such as education or specialized care for children with disabilities. Eighty years of research shows that children living in orphanages are at greater risk of abuse than their peers, with a negative impact on cognitive, physical, emotional and intellectual development. Long-term consequences include significantly higher rates of unemployment, drug abuse, suicide and sexual exploitation. In addition, orphanages are not cost effective. Studies show that funds spent on orphanages can support six to ten times as many children living at home with better results. Despite this evidence, orphanages continue to exist, and in some parts of the world the phenomenon is growing.

*Changing the Way We Care*<sup>SM</sup>, a \$100 million initiative, will work in seven diverse demonstration countries, Guatemala, Haiti, India, Indonesia, Kenya, Lebanon and Moldova, to transform care systems and demonstrate how sustainable change can be scaled. We will use our programmatic successes as evidence to influence regional political bodies, funders

and other countries to build global momentum. *Changing the Way We Care* will produce three key outcomes:

- **Governments Promote Family Care** through the improvement and implementation of policies, workforce investment and national and community systems strengthening;
- **Children Stay or Return to Families** through various family strengthening interventions that consider the wants and needs of affected children, the engagement of the local community, and the transition of orphanages into family care centers; and
- **Family Care is Promoted Globally** through global, regional and national advocacy to advance policies, best practices and the redirection of resources by multi-lateral, bi-lateral, corporate, philanthropic, faith-based and secular organizations and individuals.

*Changing the Way We Care* will galvanize a global movement to prevent children from entering institutions and will reintegrate children into safe nurturing families, because every child deserves a family.

## Implementation Strategy

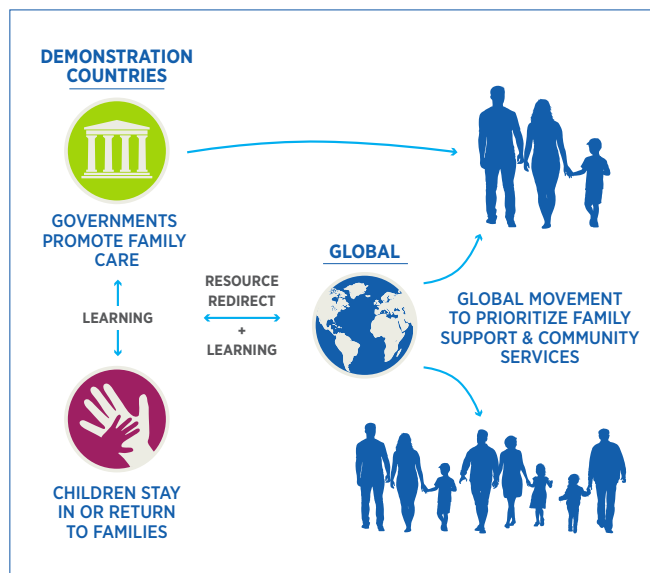
Catholic Relief Services (CRS), in partnership with Lumos and Maestral International, was one of four finalists in the MacArthur Foundation's

100&Change competition to fund a proposal that promised real and measurable progress in solving a critical problem of our time. To support our work, the MacArthur Foundation is committing \$15 million over 5 years.

*Changing the Way We Care* will use this initial funding to establish the framework for a regional and global advocacy and behavior change campaign, which is critical to long-term, sustainable change in promoting family care. We will also allocate a percentage of funds to help finalize national family-based care alternatives in Moldova while building the foundation for transitioning to family-based care for children in Kenya. As we raise additional funds, more countries will be added to our implementation plans. Our next priorities are Guatemala and Lebanon, followed by Haiti, India and Indonesia. With new partners, we will expand implementation in the priority demonstration countries and others as funds may allow, leveraged by regional and global advocacy to change the paradigm of care for vulnerable children. Additionally, we will initiate a campaign to shift how donors can expand their support to vulnerable children and provide family care options instead of orphanages.

### Combining Experience and Expertise

CRS responds to people in need in more than 100 countries, without regard to race, religion, or nationality. Lumos, a UK-based non-profit, is committed to making family care for all children a global reality. Founded by author J.K. Rowling and named after the spell in the Harry



Potter books that brings light to the darkest of places, their mission is to reveal the children hidden in institutions and transform systems of care globally. Maestral International, based in Minnesota, works globally on child protection and social welfare systems that meet the needs of children living outside of family care.

### Moving Forward

We are exploring new partnerships so we can fully implement the vision for *Changing the Way We Care* and achieve milestones of success in the first few years in the demonstration countries. These successes will further influence the way donors, policy makers and bi-lateral and multi-lateral institutions spend funds and design policy around alternative care for children living in orphanages.

To learn more please visit [changingthewaywecare.org](http://changingthewaywecare.org) or contact us at [100andchange@crs.org](mailto:100andchange@crs.org)

# Changing THE WAY WE care<sup>SM</sup>